



Jernbane-  
direktoratet

# **ISO guided transport service planning data exchange (RailDax)**

The background

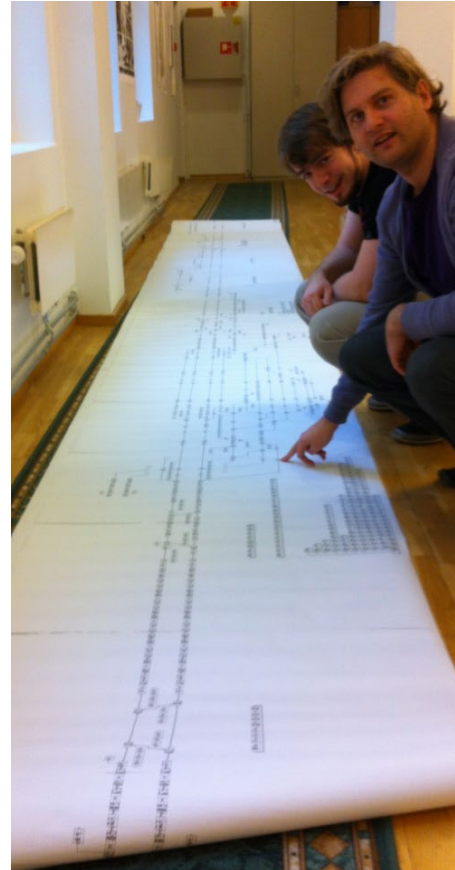


**«The standard is applicable for the track-bound\* transportation sector and the data exchange between organizations and their IT-systems. The data exchange facilitates for planning of vehicle operations.»**

**From the scope in ISO Form 4**

# The situation a few years ago and now...

- Information projection according to national or organisational rules
- On paper or «digitalt paper»
  - Excel/Word for tabells
  - PDF for drawings
- Not machine readable!



Bad information flow results in:

- Resource demanding
- Work not done
- Human errors
- Undocumented
- No support

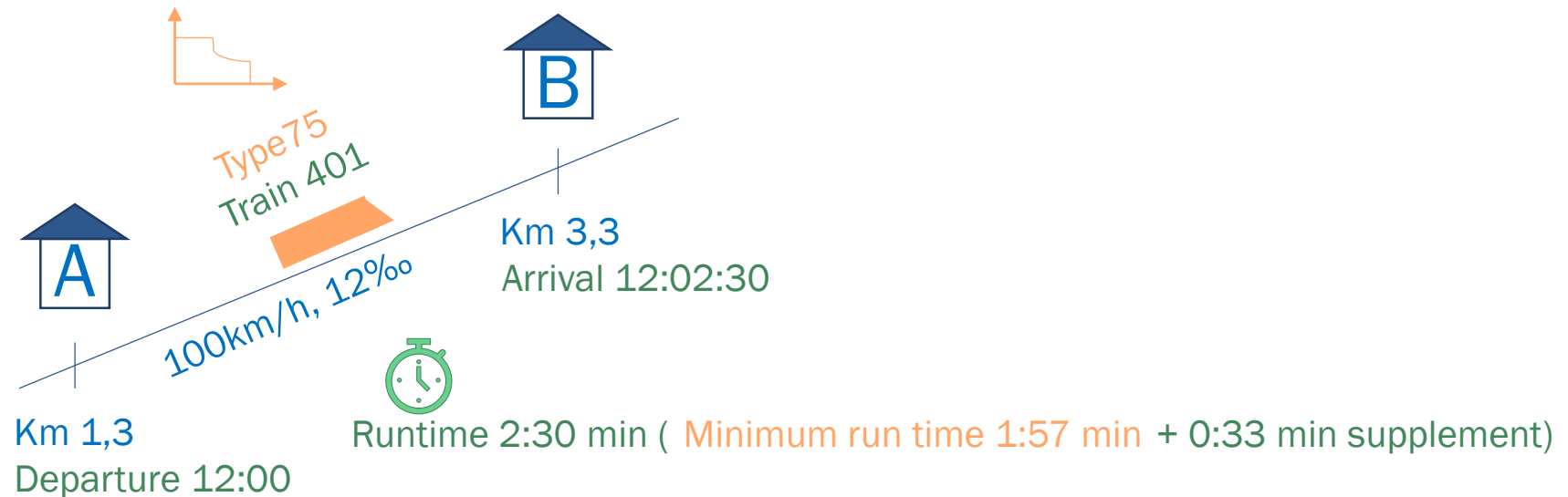
# Use cases for «service planning»

The railway sectors need for an exchange of functional/operational description of:

Infrastructure

Timetable

Rolling stock





# Colaboration

Working with additional experts through liaisons:

- ISO TC269
- CEN TC278 WG3 (PT) on TC level
- railML.org
- European Agency for Railways (ERA)

Scope states mapping to the following standards:

- NeTEx
- TAF/TAP
- RINF

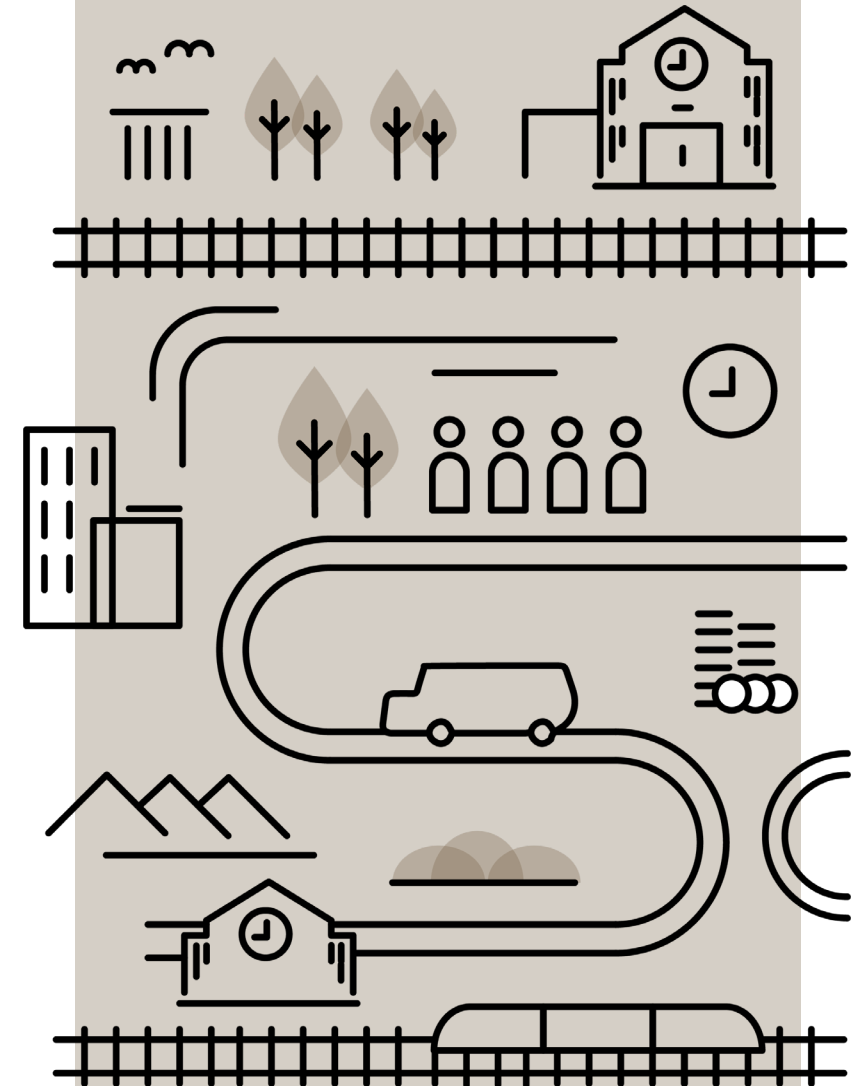
# Colaboration

Scope Use Case specifically excluded as stated by ISO Form 4:

- Public published transportation schedules
- GIS
- BIM
- TAF/TAP
- Interlocking logics and hardware design of signalling systems
- RINF
- spatial engineering design
- *ITxPt*

# Project roadmap

- This revision (decided): based on railML2.4 with mapping to Transmodel(NeTEx), TAF/TAP and RINF due to requirements for maturity and timely manner
- Next revision (3-5 years later): based on latest models available, consolidated RINF 2.0





# Project organisation

- Secretary @ Standards Norway
- Project leader @ Jernbanedirektoratet (Ove Skovdahl)
- International Experts

Input and additional international experts are welcome!

